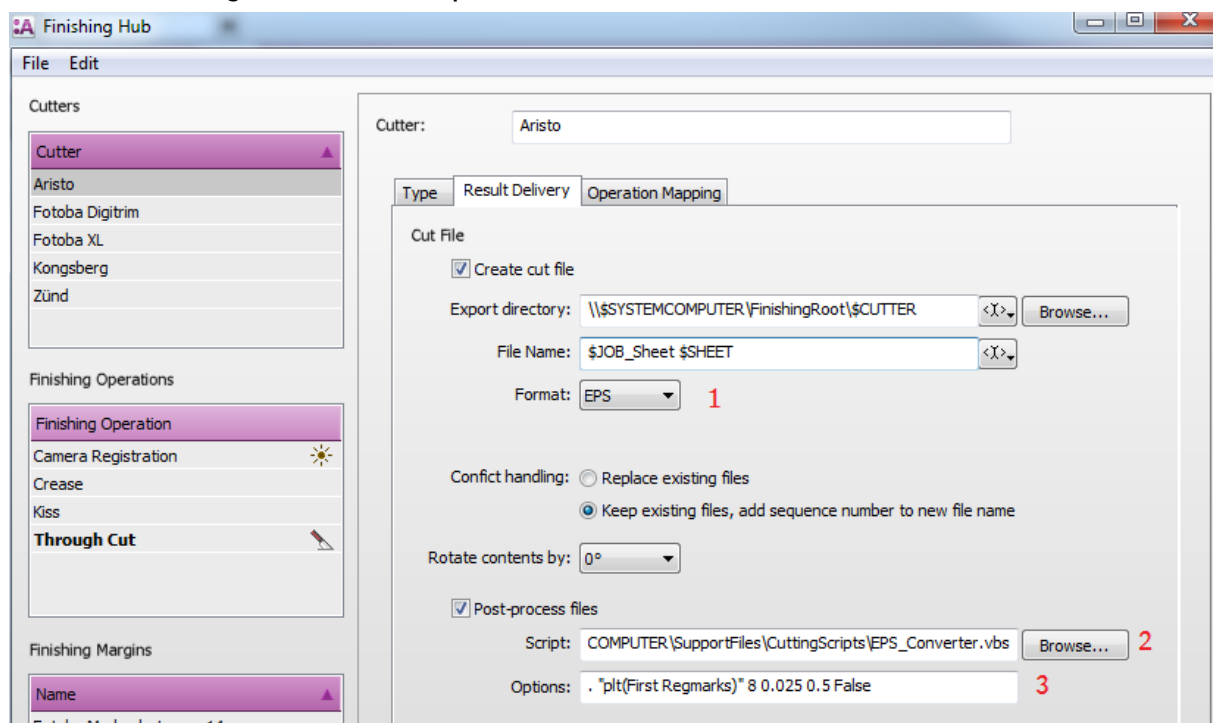


File: EPS_Converter.vbs, version: 2.48, date: 14 11 2019.

DESCRIPTION: Converts EPS to a different format. This script is not an official Agfa product. Therefore you should not log any issue on this script. For problems/remarks concerning this script mail to: Kris.willocx@agfa.com and Koen.Willemse@agfa.com.

1. Usage

1. In the cutter configuration set format to EPS.
2. Enable Post-process files and select the script.
3. Enter arguments in the Options field.



2. additional arguments

- Aristo
. "plt(First Regmarks)" 8 0.025 0.5 False
- Comagrav plt
. "plt(Comagrav)" 8 0.025 0.5 False
- Comagrav plp
. "plp(Comagrav)" 8 0.001 0.5 False
- hpgl
. "hpgl" 8 0.025 0.5 False
- hpgl2
. "hpgl2" 8 0.025 0.5 False
- hpgl Summa
. "hpgl_summa" OPOS 0.025 0.5 False
- hpgl Summa barcode
. "hpgl_summa_barcode" OPOS 0.025 0.5 False
- hpgl Summa barcode + additional arguments
. "hpgl_summa_barcode" OPOS 0.025 0.5 False "cutoffsumma SPECIAL_LOAD=SOMECUSTOMVALUE"
- plt (Regmarks at end)
. "plt" 8 0.025 0.5 False
- oxf
. "oxf" 99 0.01 0.5 False
- dxf
. "dxf" regmarks 0.1 0.5 False
- dxf(beziers)
. "dxf(beziers)" regmarks 0.1 0.5 False
- dxf(multicam)
. "dxf(multicam)" regmarks 0.1 0.5 False

- Kona plt(KONA.AL4)"
. "plt(KONA.AL4)" 8 0.001 0.5 False
- Kona plt(KONA.AL3)"
. "plt(KONA.AL3)" 8 0.001 0.5 False
- Jingwei
. "xml(Jwei)" dot 1 0.5 False
- Roland (Only available for R&D tests)
. "roland" 8 0.025 0.5 False

3. additional arguments info

There are 6 additional arguments. Between each argument there is a space e.g.: . "plt" 8 0.025 0.5 False

- Argument 1 (a dot in the example) is the location where the script will write the resulting file to. If the file needs to be written to 2 UNC paths, use a ; character to separate the paths. If the argument is a point (.), the resulting file will be exported in the same location as the eps file.

Examples:

- . "plt(First Remarks)" 8 0.025 0.5 False
-> resulting file is written to same location as eps file
 - "\\aristoserver\cutfolder" "plt(First Remarks)" 8 0.025 0.5 False
-> resulting file is written to \\aristoserver\cutfolder
 - "\\aristoserver\cutfolder;\\aristoserver2\cutfolder" "plt(First Remarks)" 8 0.025 0.5 False
-> resulting file is written to \\aristoserver\cutfolder and also to \\aristoserver2\cutfolder
- Argument 2 is the file format to convert to. This can be set to the following values:
 - "plt(First Remarks)" 'don't forget the ""
 - plt

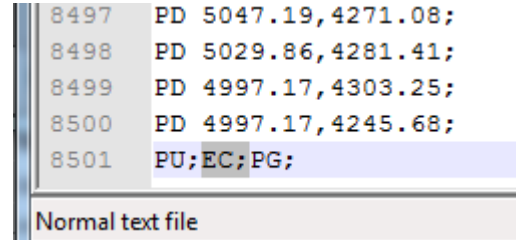
- plt(KONA.AL4)
 - plt(Comagrav)
 - plp(Comagrav)
 - hpgl
 - hpgl2
 - hpgl_summa
 - hpgl_summa_barcode
 - oxf
 - dxf
 - dxf(beziers)
 - dxf(multicam)
 - plt(KONA.AL4)
 - plt(KONA.AL3)
 - xml(Jwei)
 - roland (Only available for R&D tests)
- Argument 3 is the name of the registration marks layer. This is a string without spaces.
 - Argument 4 defines how to convert mm to cutter units. This must be a number e.g. 0.025 in the example above you define that 0.025 mm = 1 cutter unit
 - Argument 5 defines the accuracy when a vector needs to be converted by the script to line segments (0.5 = high accuracy but larger file, 5 = very low accuracy but small file)
possible values:
 - 0.5
 - 1
 - 2
 - 3
 - 4
 - 5

- Argument 6 must be set to False or True. When set to True, debug info is written into the same location as the eps file
- Argument 7 (can only be used in script version 2.39 or later):
Holds optional argument(s). It must be placed between "" as it may contain more than 1 argument (separated by space). This argument(7) doesn't need to be available. This argument can be used for Summa.

Possible values:

- "cutoffsumma SPECIAL_LOAD=SOMECUSTOMVALUE"
- "cutoffsumma"
- "SPECIAL_LOAD=SOMECUSTOMVALUE"

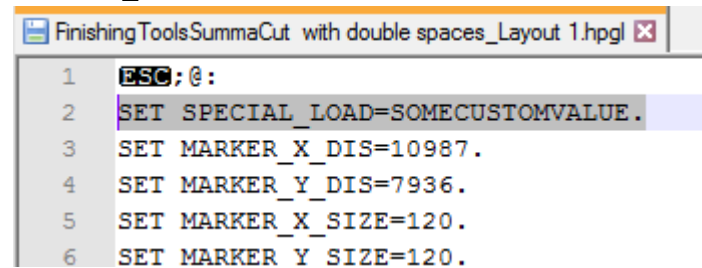
When argument 7 contains cutoffsumma, a Cutoff command is included at the end of the hppl file (EC;).



```
8497 PD 5047.19,4271.08;  
8498 PD 5029.86,4281.41;  
8499 PD 4997.17,4303.25;  
8500 PD 4997.17,4245.68;  
8501 PU;EC;PG;
```

Normal text file

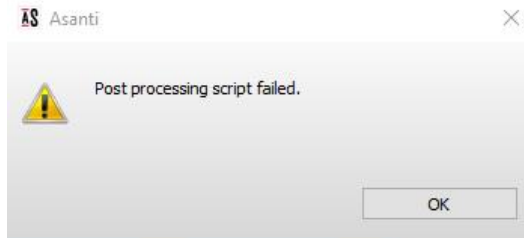
When argument 7 contains SPECIAL_LOAD=, the second line in the hppl file will contain the custom value as written next to SPECIAL_LOAD=.



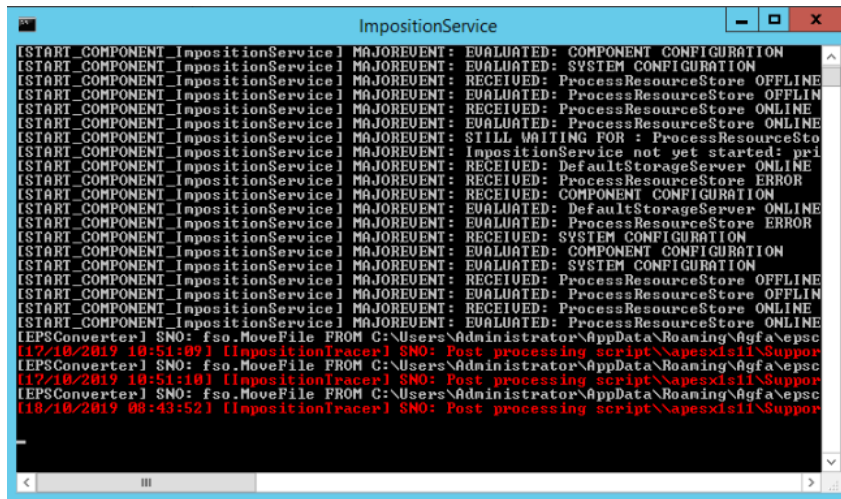
```
FinishingToolsSummaCut with double spaces_Layout 1.hppl  
1 ESC;@:  
2 SET SPECIAL_LOAD=SOMECUSTOMVALUE.  
3 SET MARKER_X_DIS=10987.  
4 SET MARKER_Y_DIS=7936.  
5 SET MARKER_X_SIZE=120.  
6 SET MARKER_Y_SIZE=120.
```

4. Error behavior

When the script fails to convert from eps to the resulting file format or if the move to the external location fails, Layout editor gives an error “Post processing script failed”.



More info about the error is traced to Impositionservice tracing.



Example of an error that appears if the remote location is not available:

```
[EPSCConverter] SNO: fso.MoveFile FROM C:\Users\Administrator\AppData\Roaming\Agfa\epsconvert\myjob1.xml TO \\apesx1s11test\archiveroot\myjob.xml FAILS: Path not found
```

[18/10/2019 08:43:52] [ImpositionTracer] SNO: Post processing script\\apesxls11\SupportFiles\CuttingScripts\EPS_Converter.vbs failed with error code: 2 for file: \\apesxls11\FinishingRoot\Jingwei\J20191017_Media_NoMediaUnit to roll media_Sheet 1.eps (cuttinggenerator.cpp:1653)

5. Bug fixes

- 2.19 Add filetype plt(First Regmarks): puts the regmarks first in the file.
- 2.20 Sometimes when a large curve is converted to lines, an artefact can appear.
- 2.20 When the plt file already exists, it is overwritten
- 2.21 When export path is a unc path, copy eps file to temp folder and first write result also in temp file
- 2.22 Added plt(Comagrav) argument. This cutter only accepts integer numbers.
- 2.23 Added plp(Comagrav) argument. This cutter only accepts integer numbers. This format supports higher precision for Comagrav cutters.
- 2.23 Added support for white icut marks.
- 2.24 remove CN command for Comagrav
- 2.24 Enable AA commands for Comagrav
- 2.25 DXF files are wrong when beziers are used in original document
- 2.36 fixes for DXF for Artioscad
- 2.37 Export debug files didn't work anymore
- 2.38 fixes Summa: when color All is used for marks, cut file was empty
- 2.39 Add optional arguments (argument7)
- 2.39 Removed error message about double spaces that are not supported in the cutting file. Double spaces are supported in Asanti 4.0.
- 2.40 support for plt(KONA.AL3)
- 2.41 Give a proper error if the plt/DXF files can't be written
- 2.41 If the EPS file is 0 KB, stop the script and give a message box with an error
- 2.42 make it possible to export cut file to multiple locations e.g.
"\\aristoserver\cutfolder;\\aristoserver2\cutfolder" "plt(First Regmarks)" 8 0.025 0.5 False
- 2.43 Include support for JingWei xml files
- 2.43 Support automatic batch testing
- 2.44 include function pretty print xml

2.45 When the EPS file cannot be found give an error

2.46 When the cut file cannot be copied to the remote location, no messagebox is given anymore on the server. Instead error tracing is shown in impositionservice tracing.

2.47 included code for Roland printer-cutters (Only available for R&D tests)

2.47 Errors are now traced to imposition service tracing

2.47 Change file extension for JWei cutters to .xml

2.47 Sometimes eps file could not be moved to internal temp director

2.48 argument to enable debug export is no longer case sensitive

2.48 DXF without beziers was sometimes converted to lines with artefacts